

What the (*Balaenoptera musculus*)?!

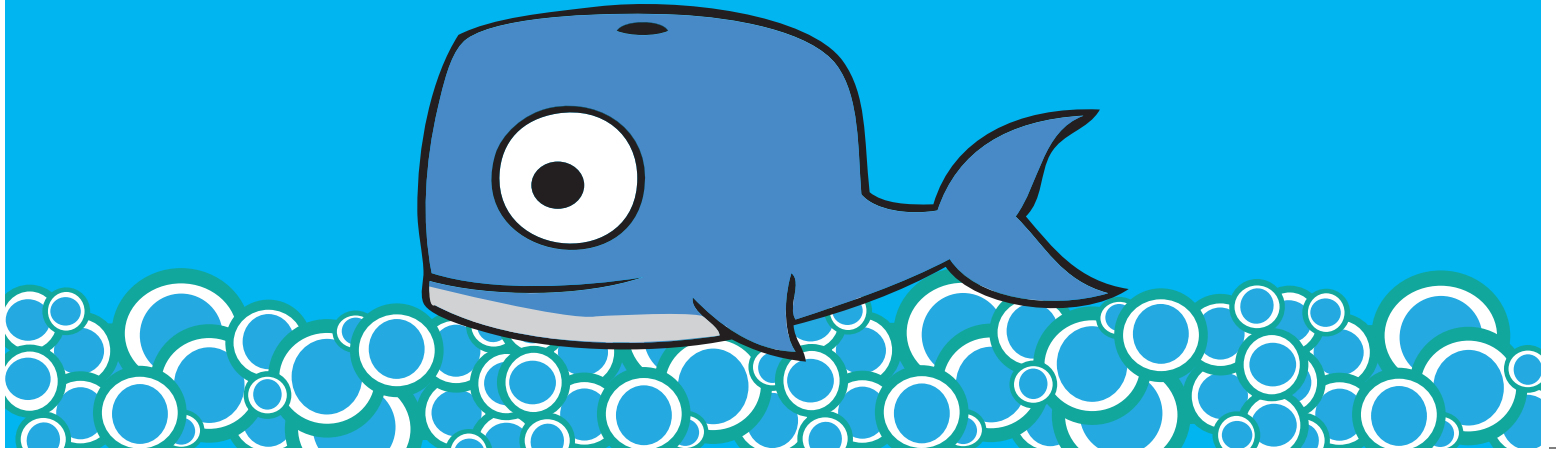


TABLE OF CONTENTS

Population

1

Anatomy

2

Life Span

3-4

Size

5

Weight

6-7

Whale Sounds

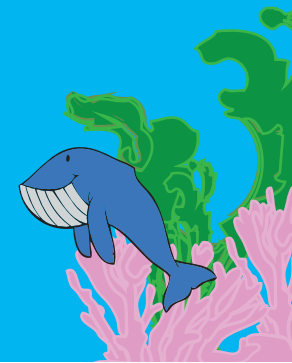
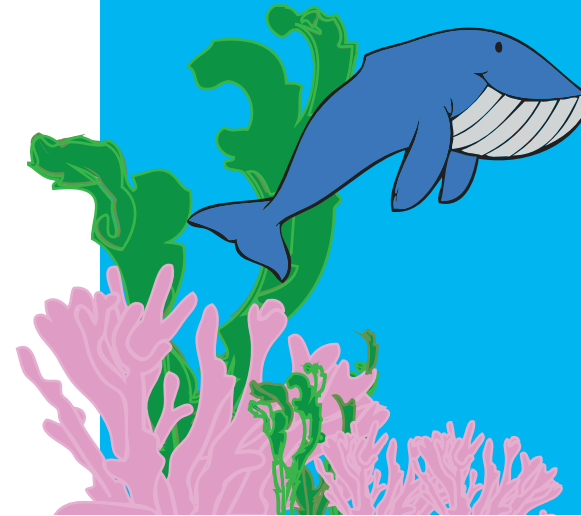
8

Whale's Heart

9

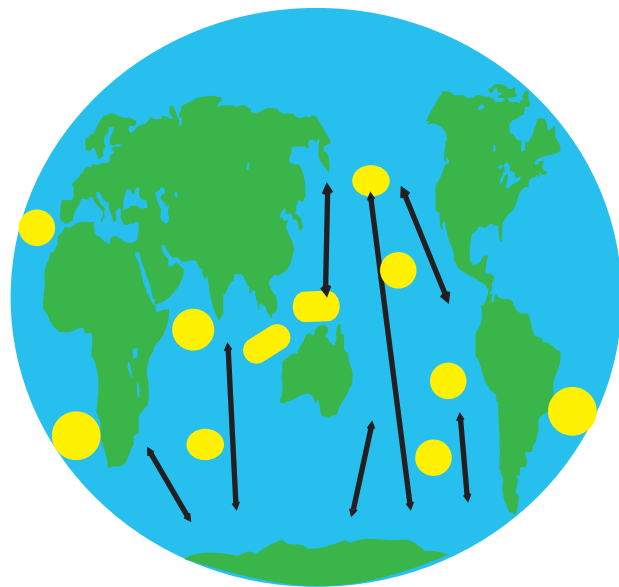
Diet

10



POPULATION

Between 10,000 to 25,000 blue whales are believed to still swim the world's oceans.



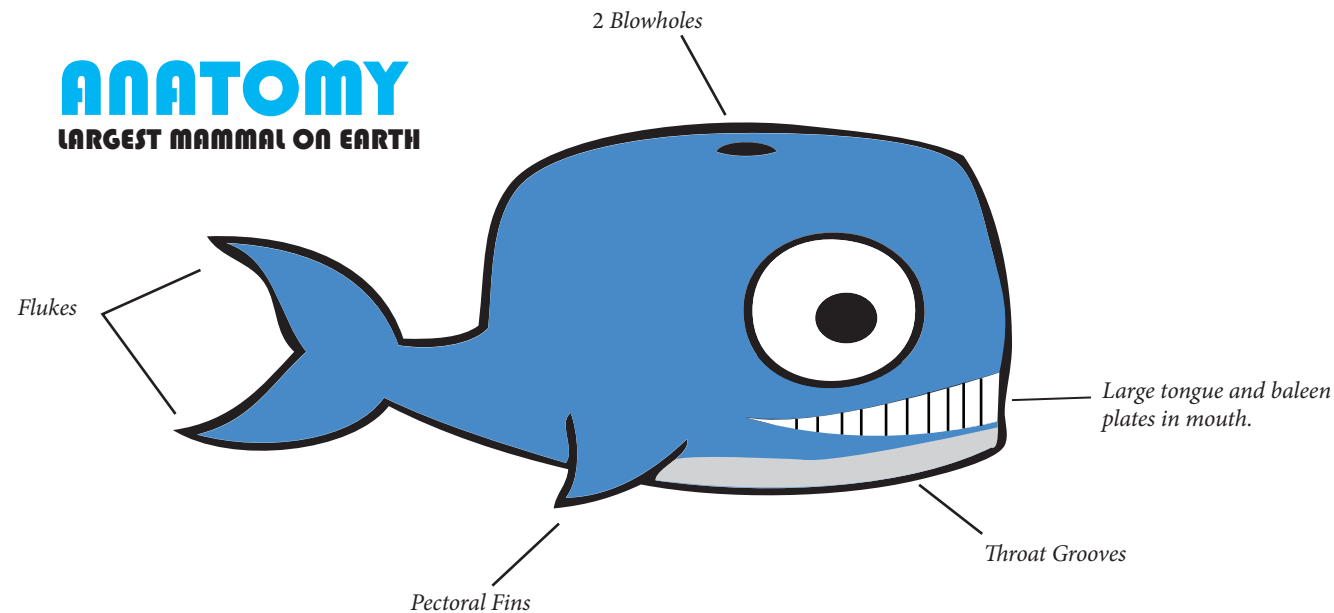
↔ MIGRATION ROUTE

■ HABITATS

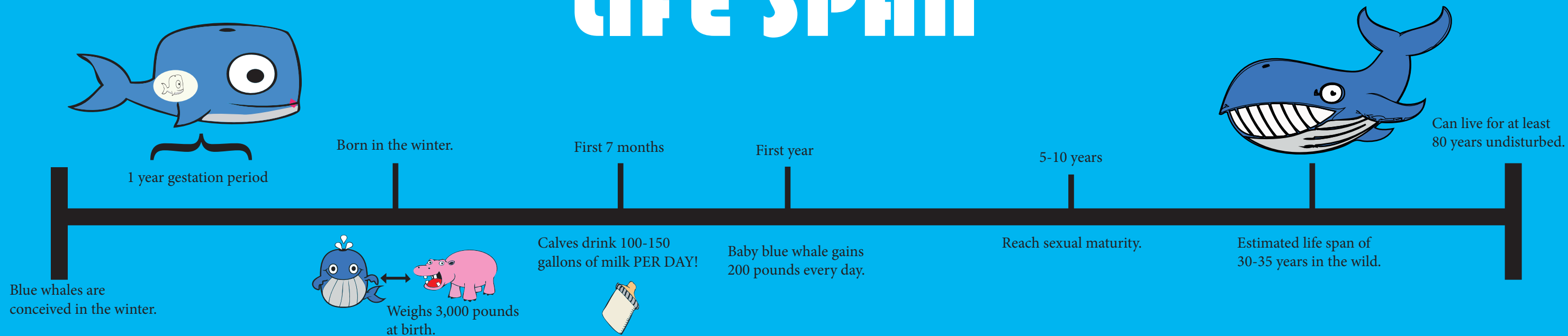
Blue whales are tied to certain areas because there are only a few places in the world, mainly the Arctic and Antarctic oceans, where there is enough plankton to sustain them. Icy water has more oxygen and carbon dioxide than warm water which makes it rich in marine life. There is up to twenty times more plankton in the Arctic and Antarctic than in the clear blue, warmer waters of the tropics. When the polar oceans freeze up during the winter, the whales migrate to the tropics where they live mainly off their thick layer of blubber.

ANATOMY

LARGEST MAMMAL ON EARTH

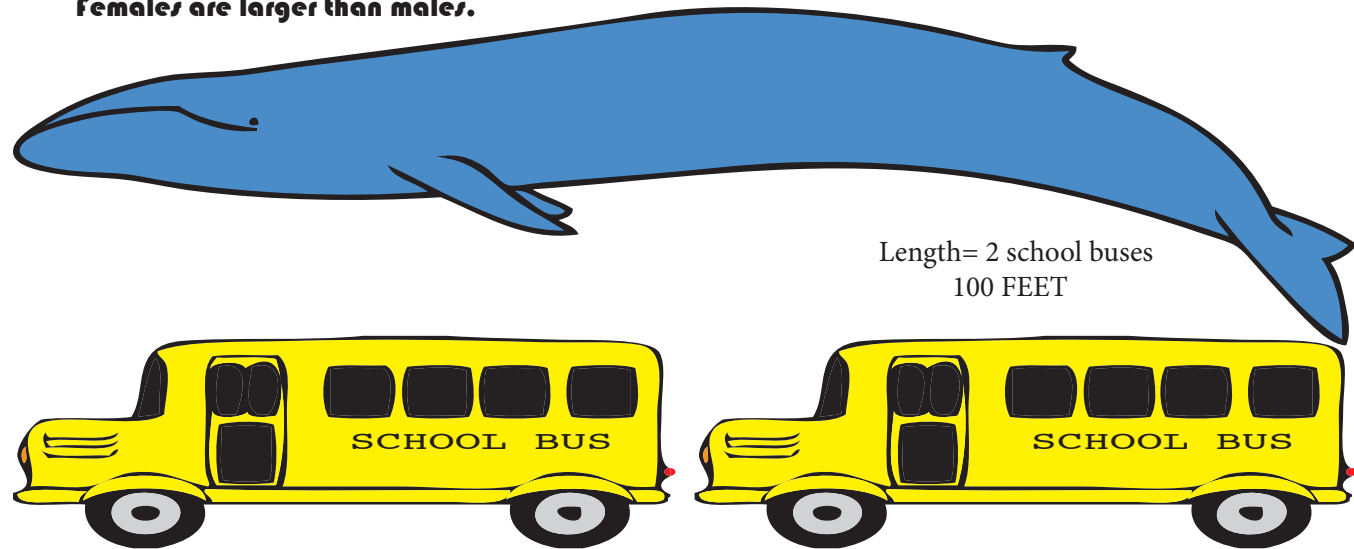


LIFE SPAN



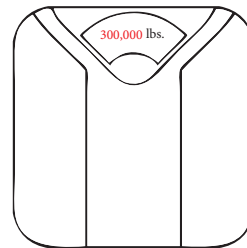
SIZE

females are larger than males.

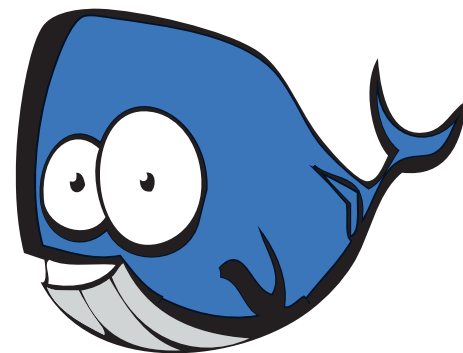
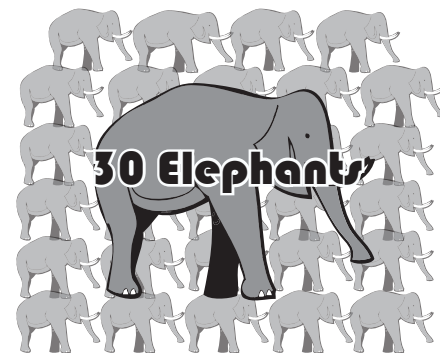


Length= 2 school buses
100 FEET

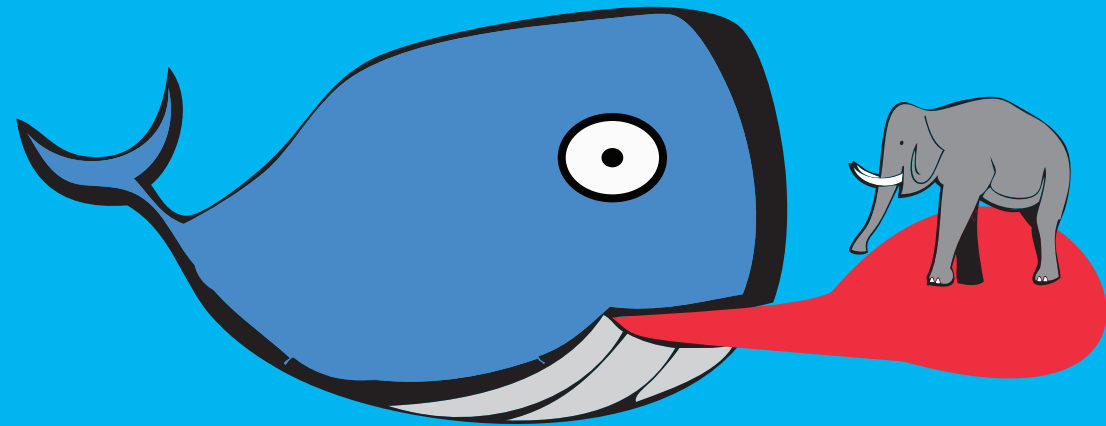
WEIGHT



WEIGHT OVER
300,000 POUNDS



A blue whale's tongue weighs as much as an adult elephant... 6,000 pounds.



WHALE SOUNDS

Blue whales can produce sounds louder than a jet engines.

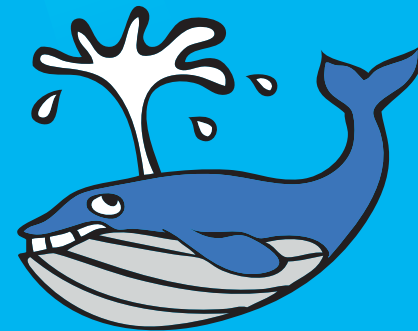
These songs are used for communicating with other blue whales, especially to find mates.

The call of the blue whale reaches levels up to 188 decibels.



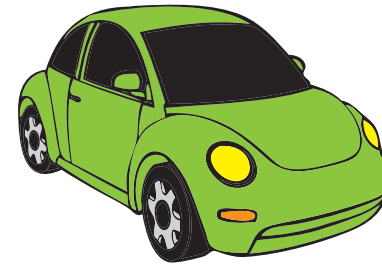
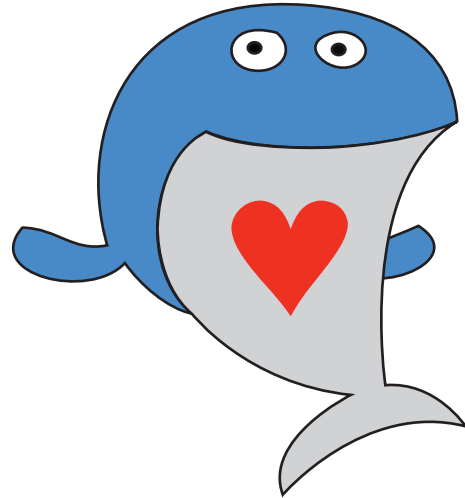
Blue whales emit very loud, highly structured, repetitive low-frequency rumbling sounds that can travel up to 1,000 miles underwater, that is from NYC to Sea World in Orlando, Florida!

loudest animal on Earth



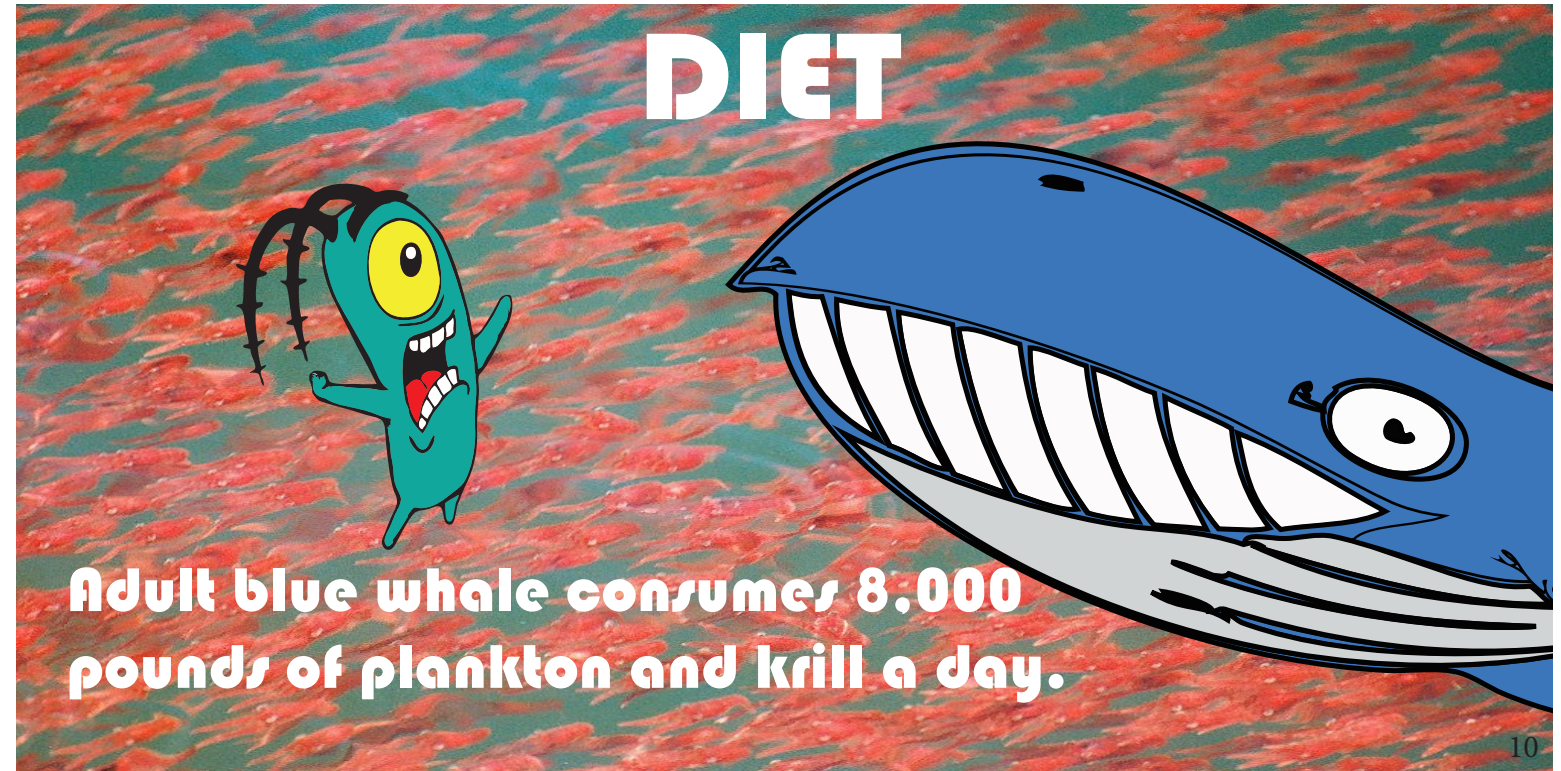
WHALE'S HEART

A blue whale's heart weighs close to 2,000 pounds.



A blue whale's heart is the size of a Volkswagen Beetle. Its heartbeat can be detected from two miles away.

DIET



Adult blue whale consumes 8,000 pounds of plankton and krill a day.

